



DLA
DEFENSE LOGISTICS AGENCY
Established 1961



The Nation's Combat Logistics Support Agency

2024 DLA Energy Facility Sustainment Directorate Overview

CAPT Bill Jakubowicz
Director Facility Sustainment
Directorate

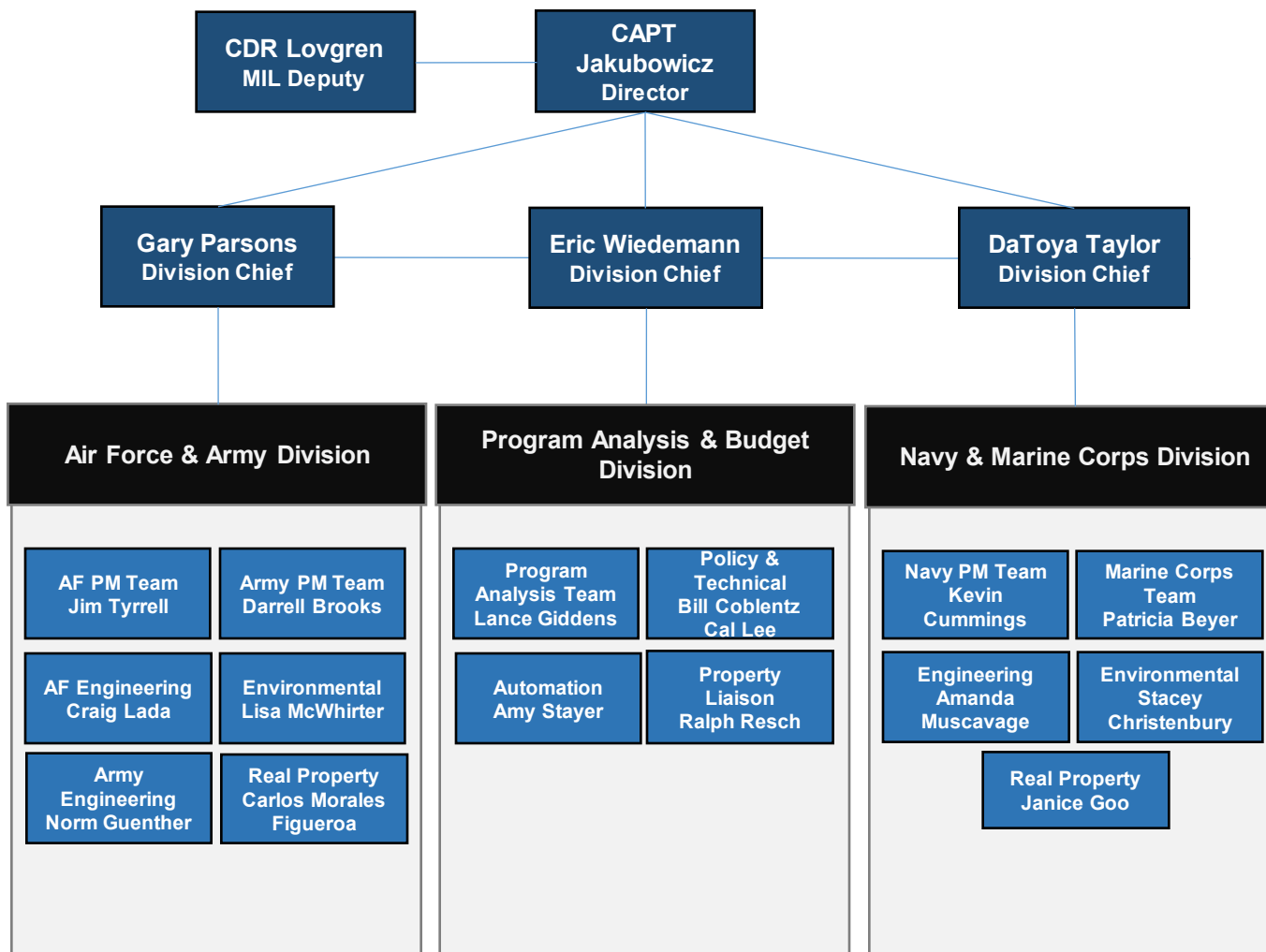


WARFIGHTER ALWAYS



FACILITY SUSTAINMENT DIRECTORATE

As of 1 April 2024





FSD Mission

- **MISSION:** Plans, programs, manages and budgets, in coordination with the Military Departments and Combatant Commands, for sustainment, restoration, modernization, maintenance, repair and environmental compliance of bulk petroleum storage and distribution facilities.
- We provide SRM support to 75% of the DoD's fixed fuel infrastructure
- We are responsible for 80% of the overall DLA SRM mission



SRM Life Cycle

4. Executes
SRM projects



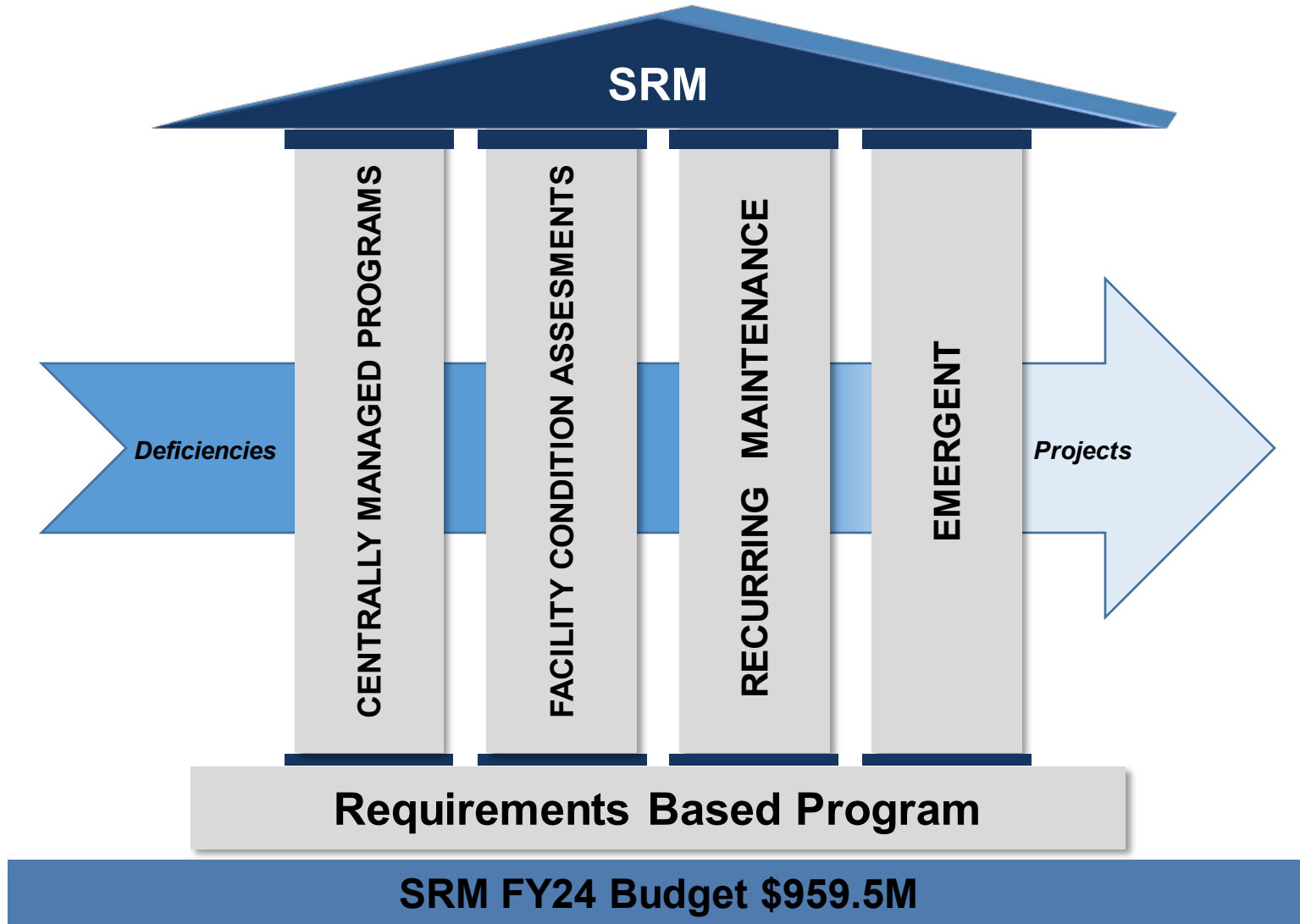
1. Real Property Owner &
Requirements Generator

2. Validates
Requirements

3. Plan, Budget, and Fund SRM
Requirements & Project Oversight

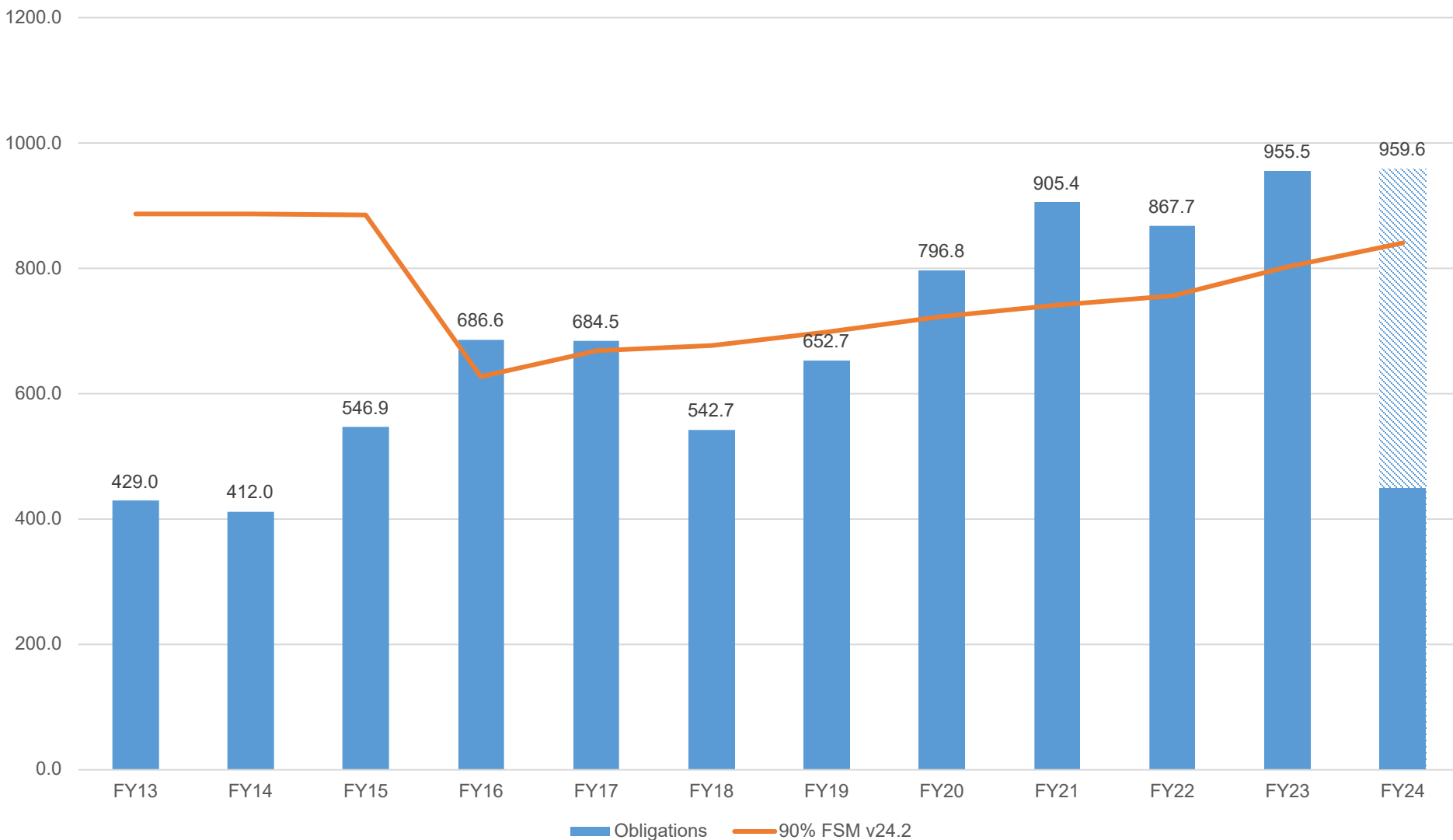


The Four Pillars of SRM





Energy SRM Obligations (in \$M)





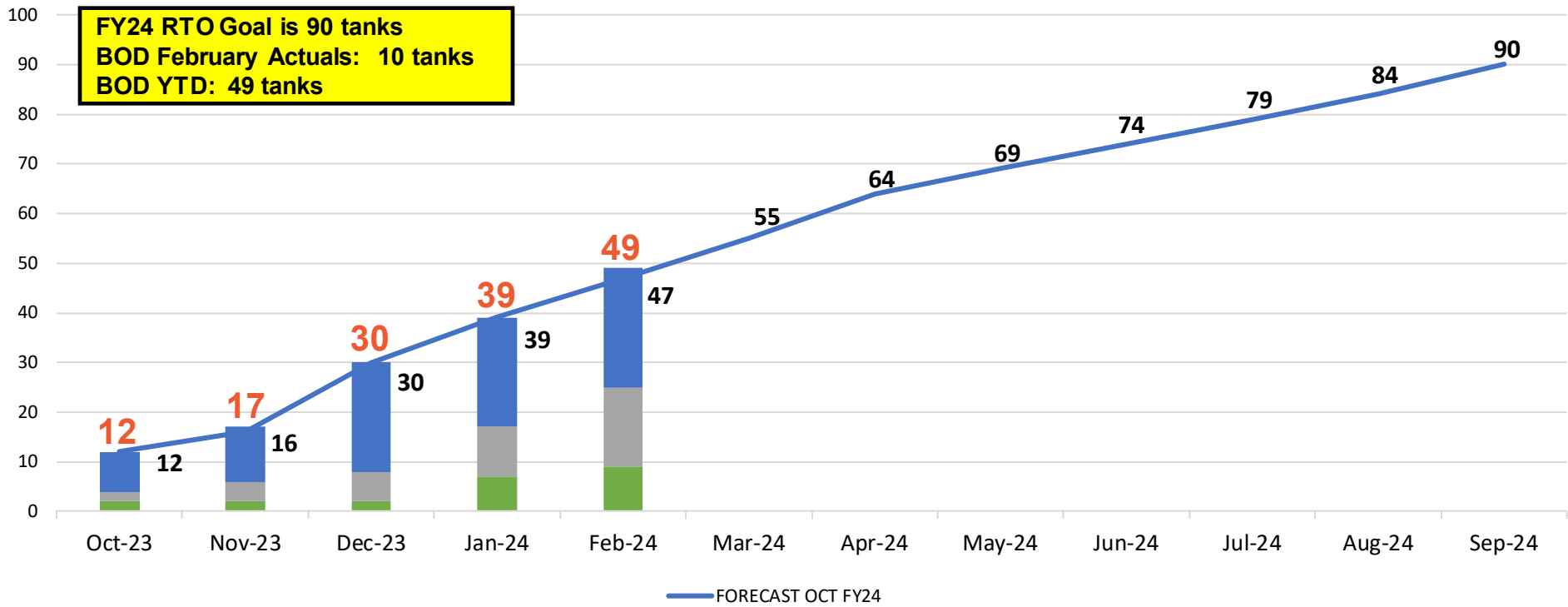
SRM TANK COUNT

SERVICE	# of API Tanks	# of STI Tanks	Total # of Tanks
AIR FORCE	735	363	1,098
ARMY	127	278	405
MARINE CORPS	82	74	156
NAVY	421	173	594
TOTAL	1,365	888	2,253



DLA ENERGY

FY24 API Tank Beneficial Occupancy Date (Scheduled vs. Actual) by Construction Agent



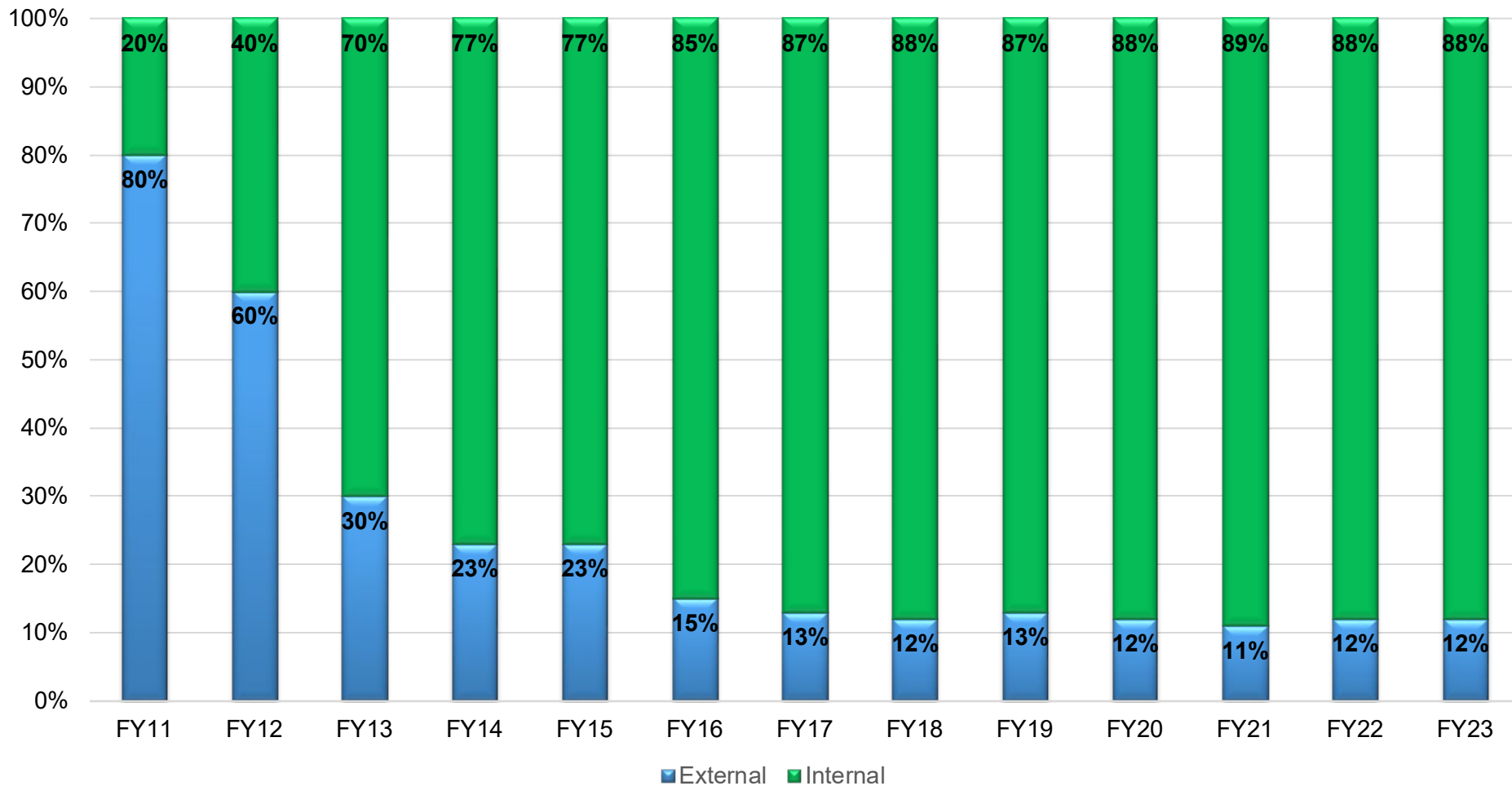
	Actuals	Actuals	Actuals	Actuals	Actuals	Planned	Actuals	Planned	Actuals	Planned	Actuals	Planned	Actuals	Planned	Actuals	Planned	Actuals	Planned	Actuals	Planned	Actuals
	Oct-23	Nov-22	Dec-22	Jan-23	Feb-23	Mar-23		Apr-23		May-23		Jun-23		Jul-23		Aug-23		Sep-23		Grand Total	
AFCEC	8	3	11	3	2	4		3		3		1		3		1		0		43	27
NAVFAC	2	2	2	4	6	2		2		1		1		0		0		1		16	16
USACE	2	0	0	2	2	2		4		1		3		2		4		5		31	6
Grand Total	12	5	13	9	10	8	0	9	0	5	0	5	0	5	0	5	0	6	0	90	49



Source of Projects End of Year

Internal: CMP, Planning Studies, & RMMR

External: Emergent





The Four Pillars of SRM Centrally Managed Programs

- Manages regulatory compliance
- Large tank inspections (API Standard > 50K gal)
 - Out of service (Internals)
 - In-service (Externals)
- Small tank inspections
 - Steel tank institute (< 50K gal ASTs)
 - Other tanks (as required by local regulations)
- Pier inspections
- Cathodic protection surveys
- Pipeline integrity management
- Railroad/loading arms/demolition





The Four Pillars of SRM Facility Condition Assessments

- Comprehensive assessment of MILDEP owned fuels infrastructure storing or transferring DLA capitalized fuel
- ESMS provides multi-level, Real-Time Stakeholder Engagement
- Multi-phased fence-to-fence assessment that identifies and documents system deficiencies related to mission requirements, operational standards, and regulatory requirements



Sandblasted to bare metal



Priming of piping and tanks



Coating complete



The Four Pillars of SRM

Recurring Maintenance & Minor Repair

- Quarterly, semi-annual and annual maintenance services performed at DLA Energy capitalized fuel facilities at 518 sites worldwide.
- Emergency response capability.





The Four Pillars of SRM Emergent

- Requirements identified outside of the centrally managed programs and planning studies or have been deemed ineligible under recurring maintenance and minor repair.
- May or may not be emergencies and are addressed by the SRM office on a case-by-case basis.
- Usually, customer identified and communicated to the DLA Energy SRM Program through the Enterprise External Business Portal, or EEBP.



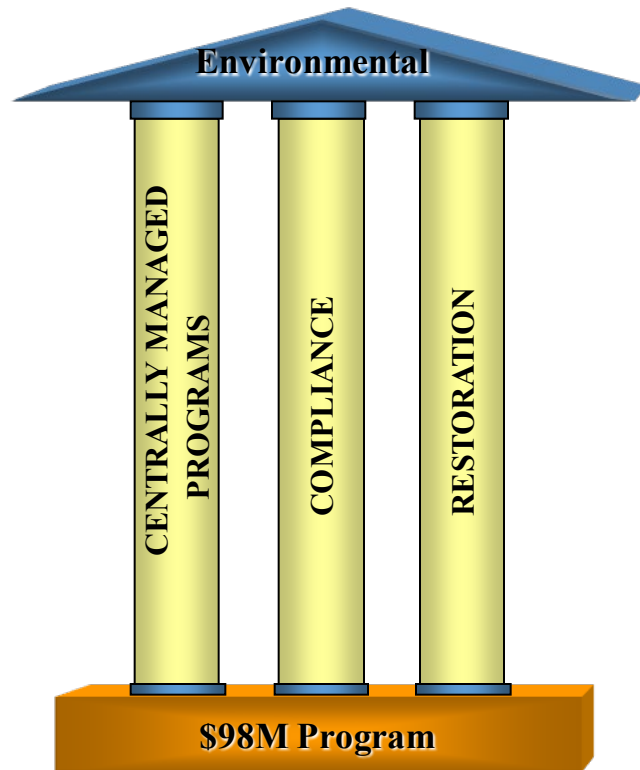
**Marine Corps Air Station
Miramar, California**

Naval Air Facility El Centro, California





Environmental Program



Centrally Managed Programs

Leak detection, spill prevention and response exercises, environmental guide

Technical and Funding Support to Capitalized Fuels Facilities

- Compliance – sampling/analysis, waste disposal, permit fees, Spill Prevention Control and Countermeasure (SPCC) and Facility Response Plans
- Restoration – spill response, assessment and cleanup of capitalized fuel; 113 active remediation sites and 46 installations

Complete Management of Permitted Sites

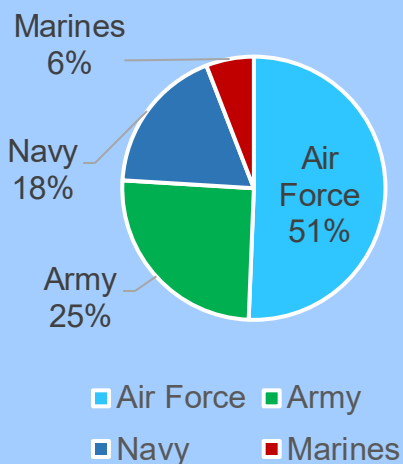
Planning Support

Capitalization/Decapitalization, National Environmental Policy Act (NEPA), Sustainment, Restoration, & Modernization (SRM)/Military Construction (MilCon) program support

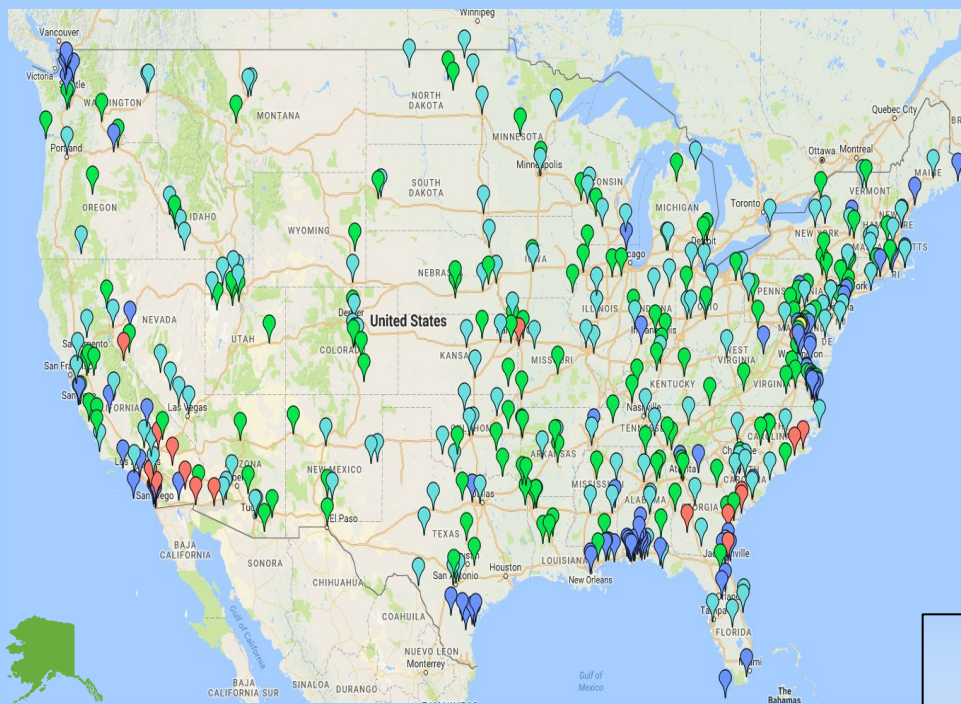


DLA Energy Real Property Fact Sheet

Real Property By MilDep



DLA Energy Real Property Plant Replacement Value (PRV) \$66.6B



Americas
PRV \$21.4B

376 DFSP / 13,065 Facilities

Air Force: 188 / 6,618
Army: 120 / 3,311
Navy: 52 / 2,374
Marines: 17 / 768

Indo-Pacific
PRV \$38B

69 DFSP / 2,966 Facilities

Air Force: 16 / 952
Army: 19 / 707
Navy: 22 / 1001
Marines: 12 / 336

Energy is 80% of DLA's Real Property Portfolio

Europe and Africa
PRV \$7.2B

48 DFSP / 2,022 Facilities

Air Force: 19 / 1,226
Army: 23 / 450
Navy: 6 / 346



Questions

